

BEAVER SERIES THREADING MACHINE

NEW

BEAVER 50G

Code No.	BG51PS
Threading Capacity	Pipe: 1/4~2" Bolt: 3/8~2" M10~42mm Conduit: 19~51mm 1/2~2"
Power	Input: 1,150W / Output: 750W
Spindle speed	38rpm (No load)
Weight	46kg
Dimensions	L: 570×W: 435×H: 360mm
Standard Accessories (BSPT or NPT)	Die-Head: 1/2~2" (Manual) Threading Oil 4L Dies: 1/2~3/4", 1~2"

BEAVER 50GAT

Code No.	BG51AS
Threading Capacity	Pipe: 1/4~2" Bolt: 3/8~2" M10~42mm Conduit: 19~51mm 1/2~2"
Power	Input: 1,150W / Output: 750W
Spindle speed	38rpm (No load)
Weight	46kg
Dimensions	L: 570×W: 435×H: 360mm
Standard Accessories	Die-Head: 1/2~2" (Auto) Threading Oil 4L Dies: 1/2~3/4", 1~2"



BEAVER 25

Code No.	BE25S
Threading Capacity	Pipe 1/4~1" Bolt 3/8~1", M10~24mm Conduit 19~39mm, 1/2~1"
Power	Input: 600W / Output: 350W
Spindle speed	52rpm (No load)
Weight	19kg
Dimensions	L: 400×W: 317×H: 320mm
Standard Accessories (BSPT or NPT)	Die-Head: 1/2~1" (Auto) Threading Oil 1L Dies: 1/2~3/4", 1~2"



BEAVER 80

Code No.	BE80E
Threading Capacity	Pipe 1/4~3" Bolt 3/8~2", M10~42mm Conduit 19~75mm, 1/2~3"
Power	Input: 1,700W / Output: 1,140W
Spindle speed	33rpm (No load)
Weight	74kg
Dimensions	L: 680×W: 480×H: 420mm
Standard Accessories (BSPT or NPT)	Die-Head: 1/2~2", 2~3" (Manual) Threading Oil 4L Dies: 1/2~3/4", 1~2", 2~3"



BEAVER 80AT

Code No.	BE8AE
Threading Capacity	Pipe 1/4~3" Bolt 3/8~2", M10~42mm Conduit 19~75mm, 1/2~3"
Power	Input: 1,700W / Output: 1,140W
Spindle speed	33rpm (No load)
Weight	74kg
Dimensions	L: 680×W: 480×H: 420mm
Standard Accessories	Die-Head: 1/2~2", 2.1/2~3" (Auto) Threading Oil 4L Dies: 1/2~3/4", 1~2", 2.1/2~3"



BEAVER 100

Code No.	BE1AE
Threading Capacity	Pipe 1/4~4" Bolt 3/8~2", M10~42mm Conduit 19~75mm, 1/2~3"
Power	Input: 1,700W / Output: 1,140W
Spindle speed	48·18rpm (2speed)
Weight	105kg
Dimensions	L: 790×W: 540×H: 480mm
Standard Accessories (BSPT or NPT)	Die-Head: 1/2~2", 2.1/2~4" (Auto) Threading Oil 4L Dies: 1/2~3/4", 1~2", 2.1/2~4"



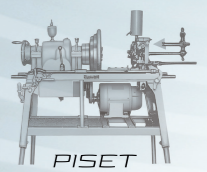
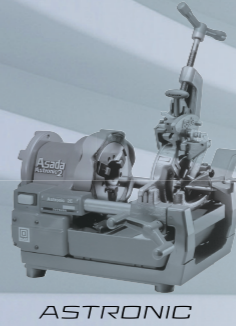
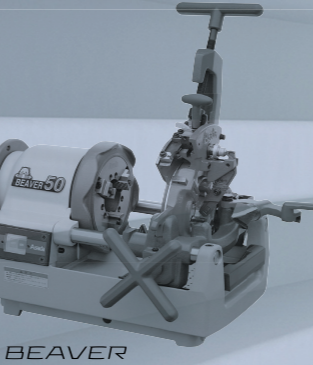
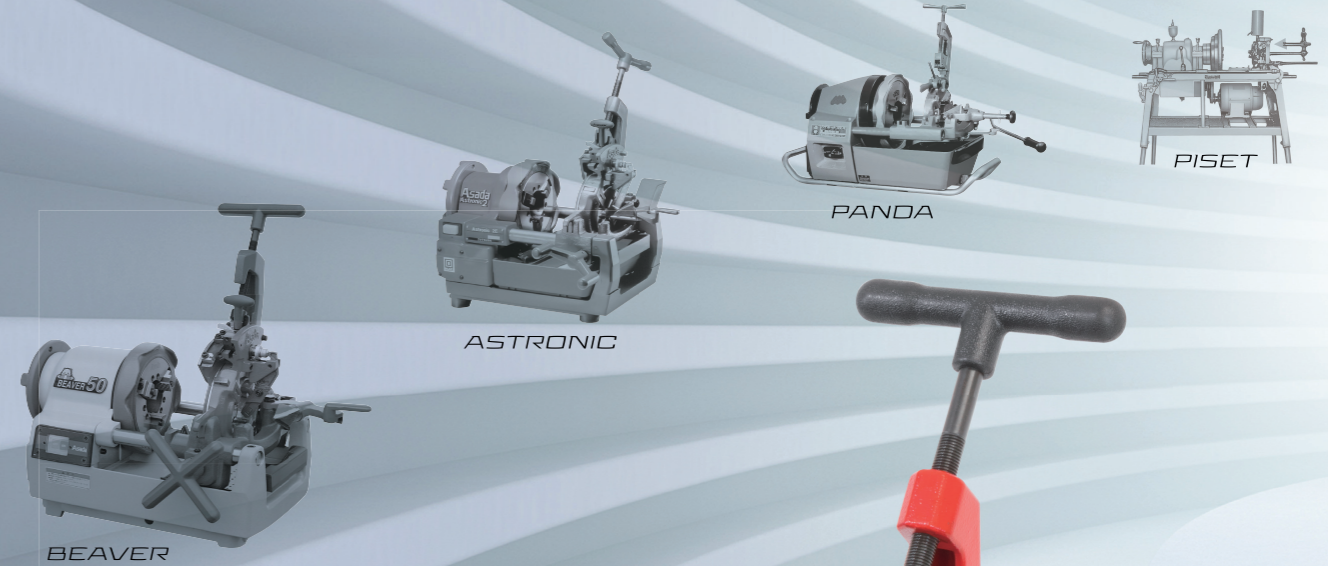
Asada

NEW

Pipe Threading Machine

BEAVER 50G

NEW GENERATION OF ASADA THREADING MACHINE



Distributed by

Asada
ASADA CORPORATION

www.asada.co.jp

3-60, Kamiida, Nishi-Machi, Kita-Ku, Nagoya, Japan 462-8551
TEL+81-52-914-1062 E-mailtrade@asada.co.jp
FAX+81-52-914-1144

Official SNS



※ Specifications may be changed without notice.

TD2301 PRINT No. 230330A

ACCURATE & PRECISE THREADING
HIGH POWER & DURABILITY
EASY OPERATION
EASY MAINTENANCE

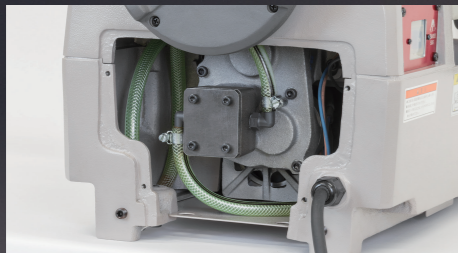
BEAVER SOG



DESIGNED WITH HISTORY OF ASADA THREADING MACHINE
— OVER 80 YEARS —

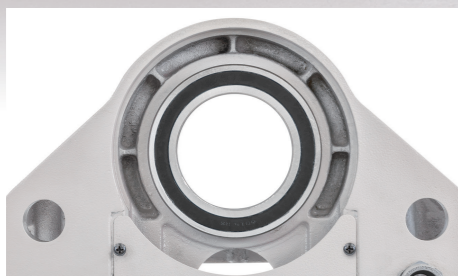
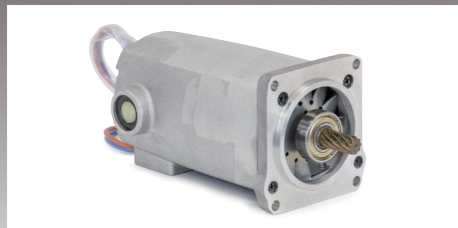
Easy Operation

Slip-free chucking
Automatic sufficient oil flow



High Power & Durability

Reliable motor with high torque
Spindle supported by ball bearings



Accurate & Precise Threading

High quality Die-Head & Dies



Easy Maintenance

Easy to replace consumables

